

Our Mission - Fulfilling needs at home and abroad through meaningful service opportunities.

Our Vision - Be the good for the environment and each other.

In addition to

H.E.L.P., we

provide electronic recycling services, which protects the environment and conserves valuable raw materials, every Friday.



Our International Service program currently assists children's

programming and education in the West Indies.



Want to Serve Others?

Fill out a volunteer application online to get started. Volunteers are key to the success of our programs and we couldn't help others without them.

Be the Good
Volunteer With Us!

Our Location



1106 N. Fifth St.
Wausau, WI 54403

715-843-5985
www.goodnewswi.com

Bridge St.

Our office/warehouse is located four blocks south of Bridge St. in Wausau, WI.

Our entrance is on the WEST side (Back) of our building.



We are a 501(c)3 non-profit.



Last year, about 2,500 families were assisted with needed medical equipment. Through reuse, these items were diverted from our landfill!



Your connection to donate or borrow used medical equipment



Call to reserve your equipment.
715-843-5985

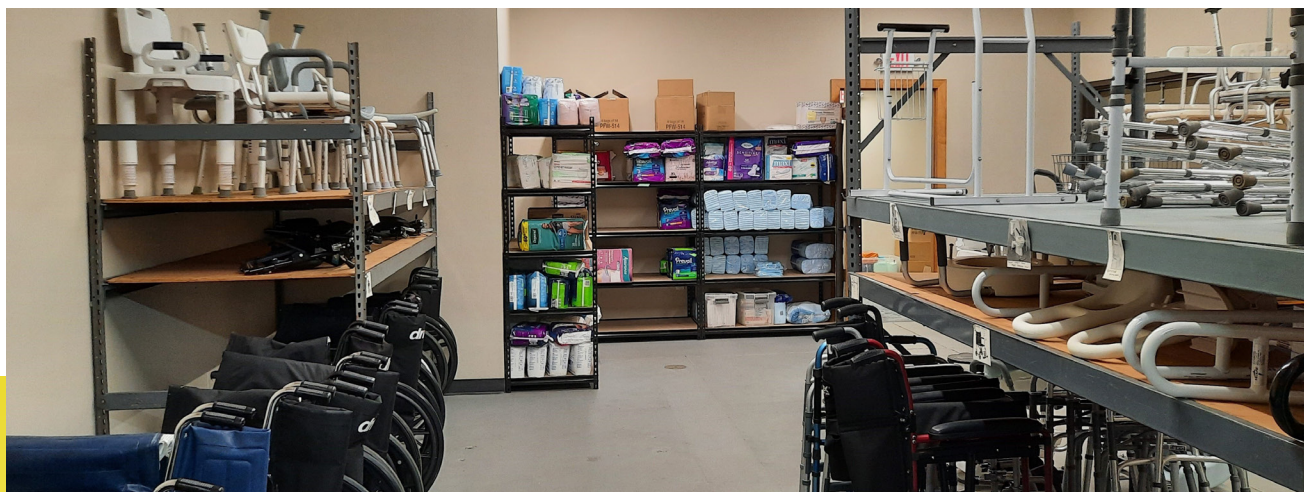
Monday - Friday
9am - 4pm
www.goodnewswi.com

How does **H.E.L.P.** work?

- By offering short-term loans of used medical equipment.
- A monetary donation is suggested.
- The equipment needs to be picked up and returned.
- We do not require a prescription, nor do we restrict usage to people in Marathon County.



State-of-the-art medical equipment sanitization, combined with equipment safety protocols, allow us to confidently lend out gently used equipment.



All of the equipment we offer has been previously used.

We safety check each piece, then clean and sanitize them before they leave our building.

Items generally available for loan:

- Bath Benches
- Bed Handles
- Canes
- Commodes
- Crutches
- Hospital Beds
- Rollators
- Shower Chairs
- Toilet Seat Risers
- Toilet Frames
- Walkers
- Wheelchairs

Items occasionally available for loan:

- Bariatric Equipment (for users over 300 pounds)
- Hoyer Lifts
- Sit-to-Stands

Items that may be available for RENT, and will require a security deposit:

- Knee Scooters
- Motorized wheelchairs

(Call for more information)

Why Support the **Health Equipment Lending Program?**

- Your gently used medical equipment donation is re-used by those in need
- Equipment doesn't end up in the landfills or need to be newly manufactured
- Volunteer hours and monetary donations allow our programs to serve our communities
- Surplus equipment is shipped overseas through collaborative efforts
- All donations are tax deductible

Did you know that we sell disposables?
Incontinence supplies, bed pads, gloves and wipes are commonly available.