

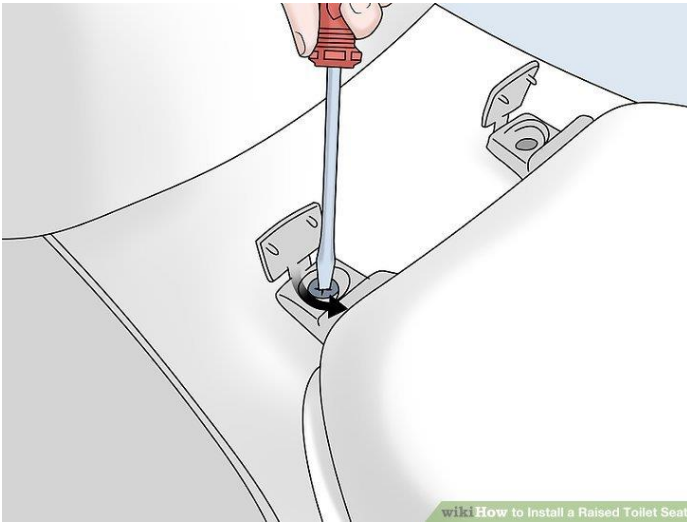
## How to install a Raised Toilet Seat (with or without arms)



**Lift your existing seat and lid to make room for the raised seat.** Raised toilet seats that replace your existing seat simply sit on top of the ceramic of your toilet bowl. Most can be placed on your toilet without you needing to remove your existing seat as there's enough room between the back of the raised seat and your tank. Instead, you can simply lift the existing seat and lid up and lean it against the tank.



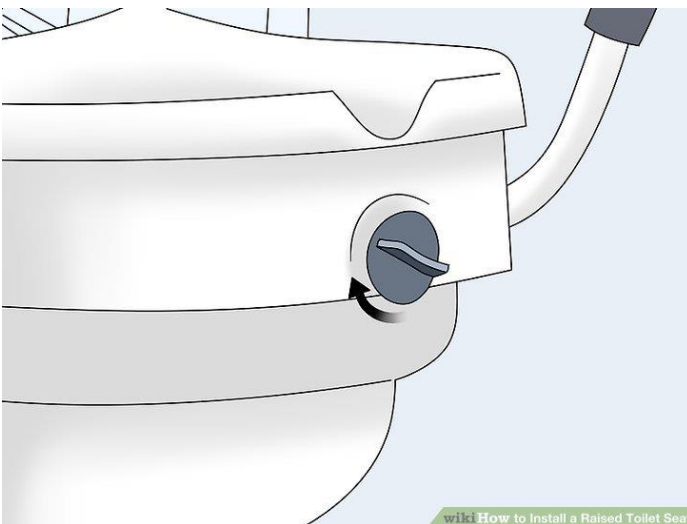
**Test if the existing seat and lid can stay or needs to be removed.** Place the raised toilet seat on the toilet bowl with the existing seat and lid flipped up. If there is not enough room for the existing seat and lid to sit against the tank, you'll need to remove it before you install the raised seat.



**Remove your existing toilet seat if required.** Kneel down in front of your toilet and reach one hand under the toilet to hold one of the nuts securing the toilet seat screw in place. Hold the nut still while using a screwdriver to loosen the screw from above. Once loose enough, remove the nut with your hand and pull out the screw. Repeat the process for the second screw and nut. Lift off the existing seat and lid and set it aside.[\[4\]](#)



**Insert the raised seat into the toilet bowl and secure the flanges.** Most raised toilet seats have 1 or more flanges which hold the seat inside the toilet bowl. You may need to tilt the seat slightly forward or backwards in order to slip the flanges into the bowl. Once inserted, push the raised seat down onto the bowl until it's secured. Shake the seat gently to make sure it's been properly installed and balanced.



**Use the adjustment knob, if required, to secure the raised seat.** Some raised toilet seats have an adjustment knob at the front that's attached to an adjustment bracket inside the toilet bowl. Turn the knob counterclockwise to loosen the adjustment bracket. Turn the knob clockwise to tighten the adjustment bracket. Turn the knob to tighten the adjustment bracket against the toilet bowl and secure it in place.