



MDS89697

Half Rails

INSTALLATION & USER INSTRUCTIONS

NOTE: Check all parts for shipping damage. In case of shipping damage, DO NOT use. Contact Carrier/Dealer for further instruction.

WARNING

DO NOT assemble or use this equipment without first reading and understanding this instruction sheet. If you are unable to understand the Warnings, Cautions or Instructions, contact a healthcare professional, dealer or technical personnel before attempting to install this equipment, otherwise injury or damage may occur.

After assembly and BEFORE use, ensure that ALL attaching hardware is securely tightened.

If, for any reason, a proper fit in installation cannot be achieved, DO NOT USE not use and contact retailer where purchased for return instructions.

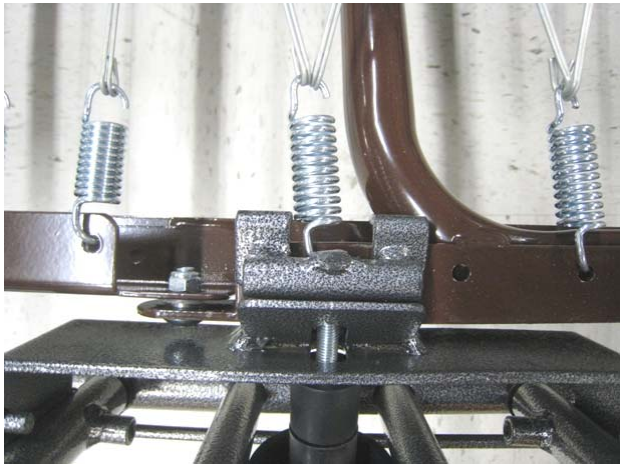
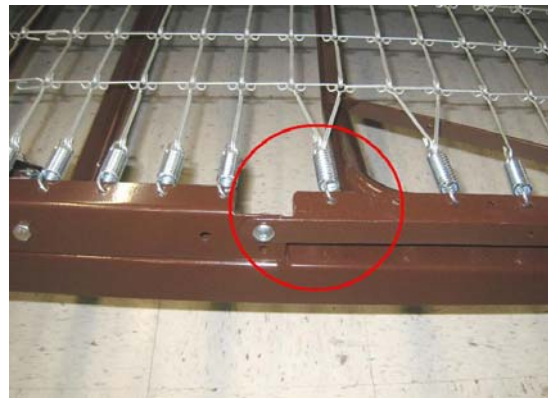


Contents for Side Rail:

Rail Knob Spacer Hook

Installing Half Rails

1. Loosely assemble the knob, spacer and hook to the rail/s in the correct order. The spacer is placed between the knob and the outside of the rail. The hook is inserted through the rail from the inside.
2. To prevent entrapment, the rail must be attached near the hinge where the head section meets the seat section. The hook will grab the deck on either side of the deck spring that is closest to the hinge. See picture at right.
3. Attach the rail by positioning the bottom of the clamp under the deck first, and then pushing the hooks over the top of the deck so that there is a secure fit as shown below.
4. Tighten until both clamps are tight and secured to deck.



LIMITED WARRANTY

Your Medline Product is warranted to be free of material defects in materials and workmanship for a period of one (1) year from the date of purchase. This express warranty extends to the original purchaser only. In the event of a defect or failure covered by this warranty, contact us at 1-800-MEDLINE. Medline will, at its option, repair or replace your Medline product. This warranty does not extend to damage or failure occurring as a result of owner misuse or negligence, normal wear and tear or other causes unrelated to the manufacture and design of the product. This express warranty is Medline's sole and exclusive warranty and your sole remedy in the event of default or failure. Medline is not responsible for any consequential or incidental damages or costs arising from use of the warranted products, or any defect therein or failure thereof. Medline disclaims all other warranties including but not limited to the implied warranties of merchantability and fitness for a particular purpose.